

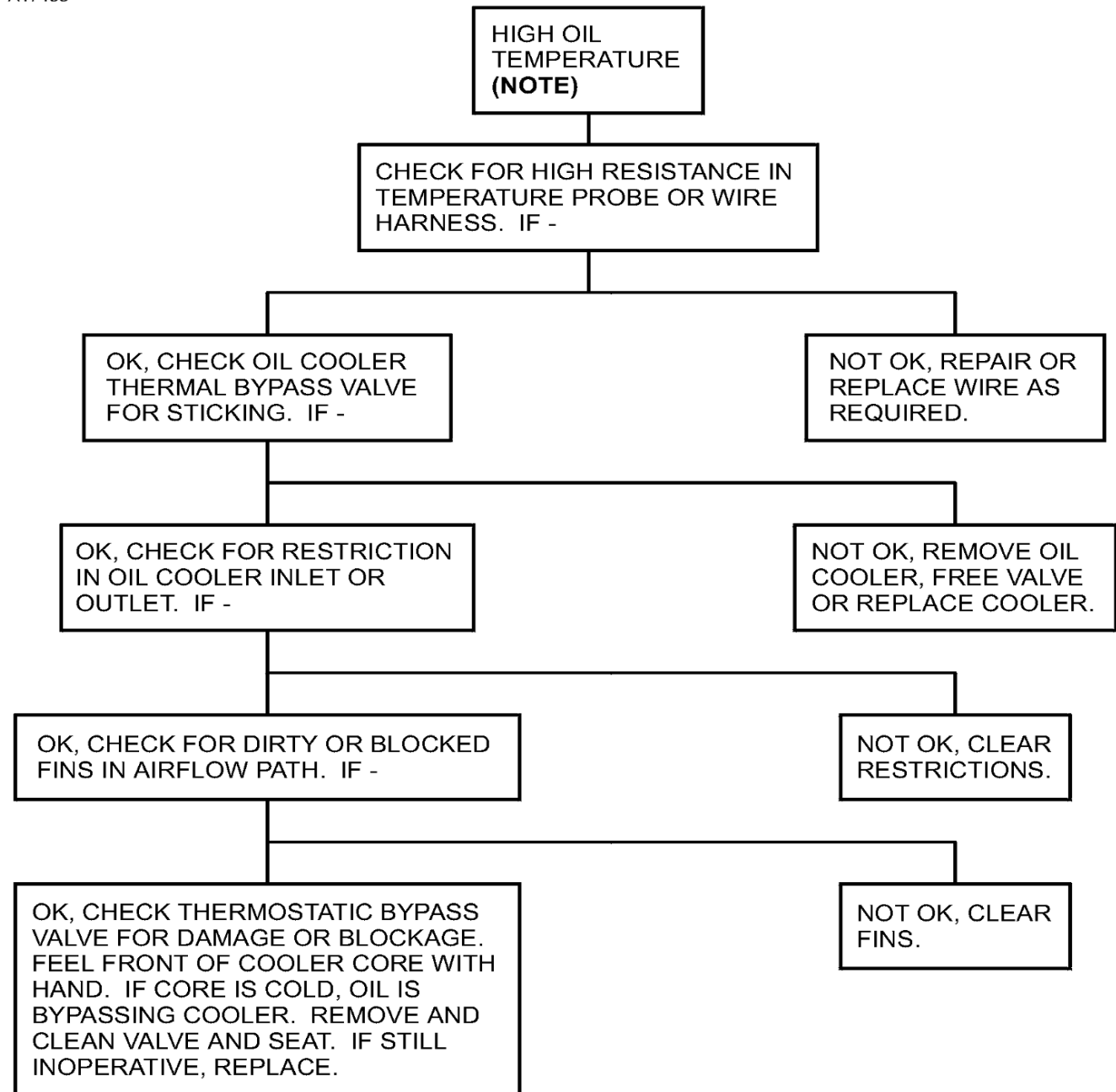
OIL INDICATING - TROUBLESHOOTING
(PT6A-114/PT6A-114A)

1. General

- A. A troubleshooting chart has been prepared to aid the maintenance technician in system troubleshooting. Refer to Figure 101.

Figure 101 : Sheet 1 : Oil Indicating System Troubleshooting Chart

A17455



NOTE: EXCESSIVE IDLING IN FEATHER CAN CAUSE HIGH OIL TEMPERATURE INDICATION.

Figure 101 : Sheet 2 : Oil Indicating System Troubleshooting Chart

A17459

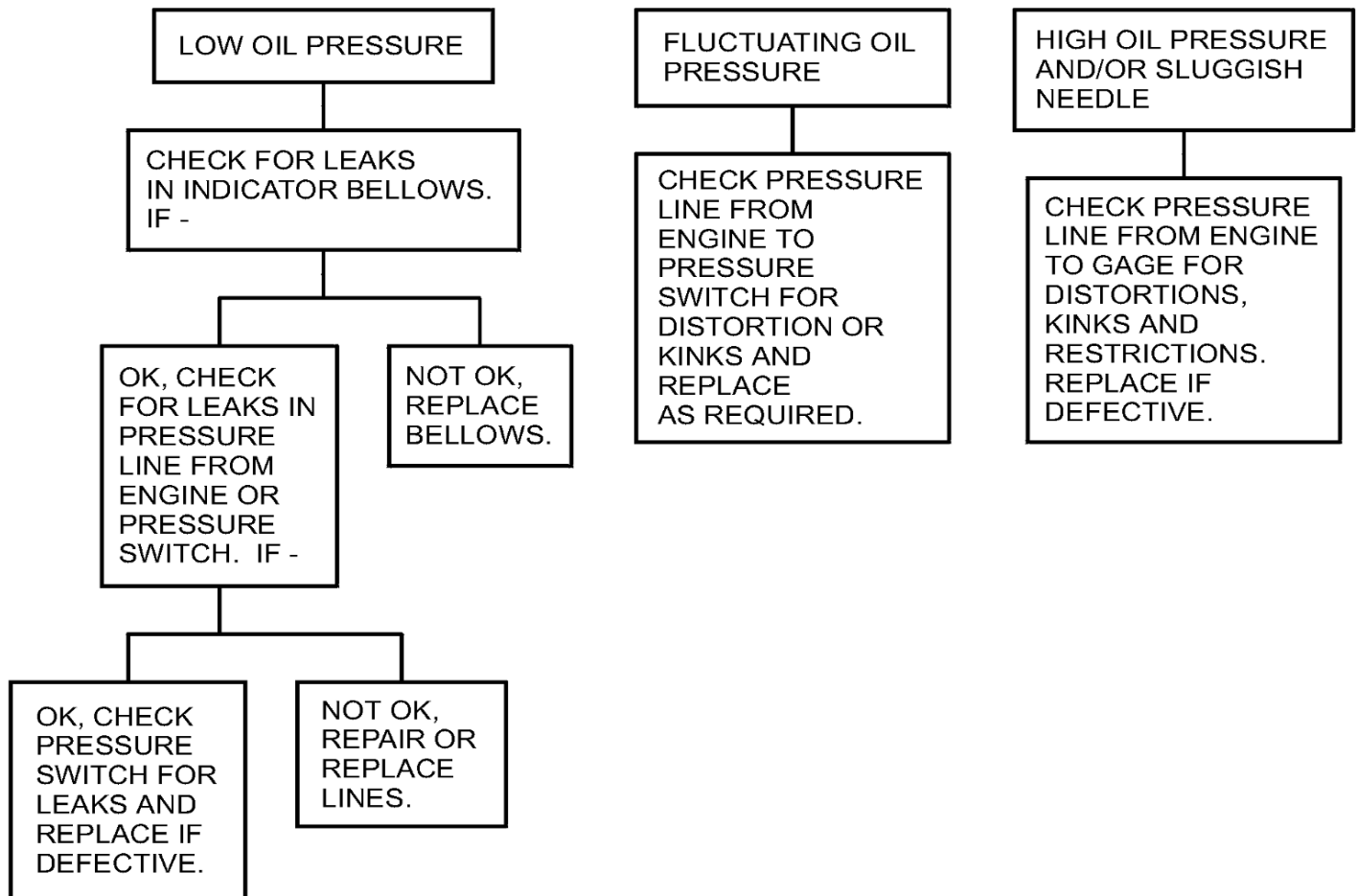


Figure 101 : Sheet 3 : Oil Indicating System Troubleshooting Chart

A17460

